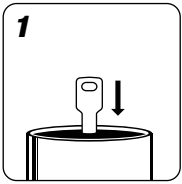
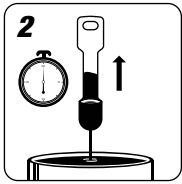


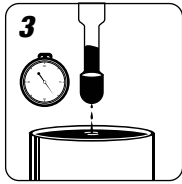
INSTRUCTIONS



1 Dip the viscosity cup into paint until full.



2 Remove cup from paint. Begin timing the flow from the opening at the bottom of the cup. (a stop watch is preferred for this step)



3 Stop the timer once the stream of paint breaks.

VISCOSITY REFERENCE CHART (DuPont)

TOPCOATS AND CLEARS

	VISCOSITY / SECONDS
Chromabase*	15 - 17
Chromaclears* 7500S, 7600S, 7800S	17 - 19
Chromaone	18 - 22
Cronar* Single Stage & Base Color	17 - 19
Imron* Single Stage & 500S Clear	18 - 22
Centari* Single Stage & Base Color	18 - 22
Dulux* Enamel	20 - 23
Lucite* Single Stage & Base Color	18 - 22
Acrylic Clear 380S	18 - 22
Urethane Clears 580S, 780S, 1080S	18 - 21

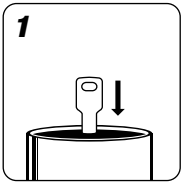
VISCOSITY / SECONDS

UNDERCOATS

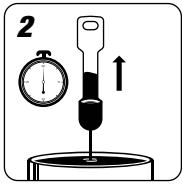
	VISCOSITY / SECONDS
Chromaprime* 4660S	25 - 30
Corlar* Epoxy Primers 824S, 825S	20 - 23
Fill 'N' Sand 131S, 181S	18 - 20
Lacquer Primers 30S, 70S, 80S	20 - 24
Non-Sanding Primer Sealer 1696S, 1697S, 1858S	23 - 30
Preparakote* Alkyd Primer Surfacer 3011S, 3012S, 3055S	17 - 24
Uro* Primer 1120S, 1140S	20 - 23

□ For optimum refinishing results, adjust viscosity by adding more Basemaker, thinner or reducer to match the specific product's label recommendation. In general, the following measurements for DuPont products may be used as a guide.

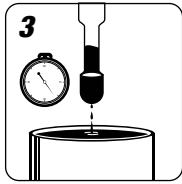
INSTRUCTIONS



1 Dip the viscosity cup into paint until full.



2 Remove cup from paint. Begin timing the flow from the opening at the bottom of the cup. (a stop watch is preferred for this step)



3 Stop the timer once the stream of paint breaks.

VISCOSITY REFERENCE CHART (DuPont)

TOPCOATS AND CLEARS

	VISCOSITY / SECONDS
Chromabase*	15 - 17
Chromaclears* 7500S, 7600S, 7800S	17 - 19
Chromaone	18 - 22
Cronar* Single Stage & Base Color	17 - 19
Imron* Single Stage & 500S Clear	18 - 22
Centari* Single Stage & Base Color	18 - 22
Dulux* Enamel	20 - 23
Lucite* Single Stage & Base Color	18 - 22
Acrylic Clear 380S	18 - 22
Urethane Clears 580S, 780S, 1080S	18 - 21

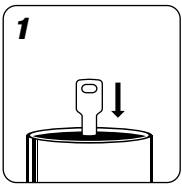
VISCOSITY / SECONDS

UNDERCOATS

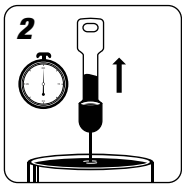
	VISCOSITY / SECONDS
Chromaprime* 4660S	25 - 30
Corlar* Epoxy Primers 824S, 825S	20 - 23
Fill 'N' Sand 131S, 181S	18 - 20
Lacquer Primers 30S, 70S, 80S	20 - 24
Non-Sanding Primer Sealer 1696S, 1697S, 1858S	23 - 30
Preparakote* Alkyd Primer Surfacer 3011S, 3012S, 3055S	17 - 24
Uro* Primer 1120S, 1140S	20 - 23

□ For optimum refinishing results, adjust viscosity by adding more Basemaker, thinner or reducer to match the specific product's label recommendation. In general, the following measurements for DuPont products may be used as a guide.

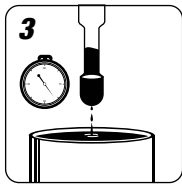
INSTRUCTIONS



1 Dip the viscosity cup into paint until full.



2 Remove cup from paint. Begin timing the flow from the opening at the bottom of the cup. (a stop watch is preferred for this step)



3 Stop the timer once the stream of paint breaks.

VISCOSITY REFERENCE CHART (DuPont)

TOPCOATS AND CLEARS

	VISCOSITY / SECONDS
Chromabase*	15 - 17
Chromaclears* 7500S, 7600S, 7800S	17 - 19
Chromaone	18 - 22
Cronar* Single Stage & Base Color	17 - 19
Imron* Single Stage & 500S Clear	18 - 22
Centari* Single Stage & Base Color	18 - 22
Dulux* Enamel	20 - 23
Lucite* Single Stage & Base Color	18 - 22
Acrylic Clear 380S	18 - 22
Urethane Clears 580S, 780S, 1080S	18 - 21

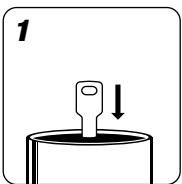
VISCOSITY / SECONDS

UNDERCOATS

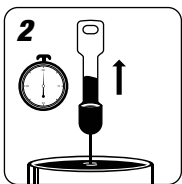
	VISCOSITY / SECONDS
Chromaprime* 4660S	25 - 30
Corlar* Epoxy Primers 824S, 825S	20 - 23
Fill 'N' Sand 131S, 181S	18 - 20
Lacquer Primers 30S, 70S, 80S	20 - 24
Non-Sanding Primer Sealer 1696S, 1697S, 1858S	23 - 30
Preparakote* Alkyd Primer Surfacer 3011S, 3012S, 3055S	17 - 24
Uro* Primer 1120S, 1140S	20 - 23

□ For optimum refinishing results, adjust viscosity by adding more Basemaker, thinner or reducer to match the specific product's label recommendation. In general, the following measurements for DuPont products may be used as a guide.

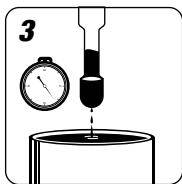
INSTRUCTIONS



1 Dip the viscosity cup into paint until full.



2 Remove cup from paint. Begin timing the flow from the opening at the bottom of the cup. (a stop watch is preferred for this step)



3 Stop the timer once the stream of paint breaks.

VISCOSITY REFERENCE CHART (DuPont)

TOPCOATS AND CLEARS

	VISCOSITY / SECONDS
Chromabase*	15 - 17
Chromaclears* 7500S, 7600S, 7800S	17 - 19
Chromaone	18 - 22
Cronar* Single Stage & Base Color	17 - 19
Imron* Single Stage & 500S Clear	18 - 22
Centari* Single Stage & Base Color	18 - 22
Dulux* Enamel	20 - 23
Lucite* Single Stage & Base Color	18 - 22
Acrylic Clear 380S	18 - 22
Urethane Clears 580S, 780S, 1080S	18 - 21

VISCOSITY / SECONDS

UNDERCOATS

	VISCOSITY / SECONDS
Chromaprime* 4660S	25 - 30
Corlar* Epoxy Primers 824S, 825S	20 - 23
Fill 'N' Sand 131S, 181S	18 - 20
Lacquer Primers 30S, 70S, 80S	20 - 24
Non-Sanding Primer Sealer 1696S, 1697S, 1858S	23 - 30
Preparakote* Alkyd Primer Surfacer 3011S, 3012S, 3055S	17 - 24
Uro* Primer 1120S, 1140S	20 - 23

□ For optimum refinishing results, adjust viscosity by adding more Basemaker, thinner or reducer to match the specific product's label recommendation. In general, the following measurements for DuPont products may be used as a guide.