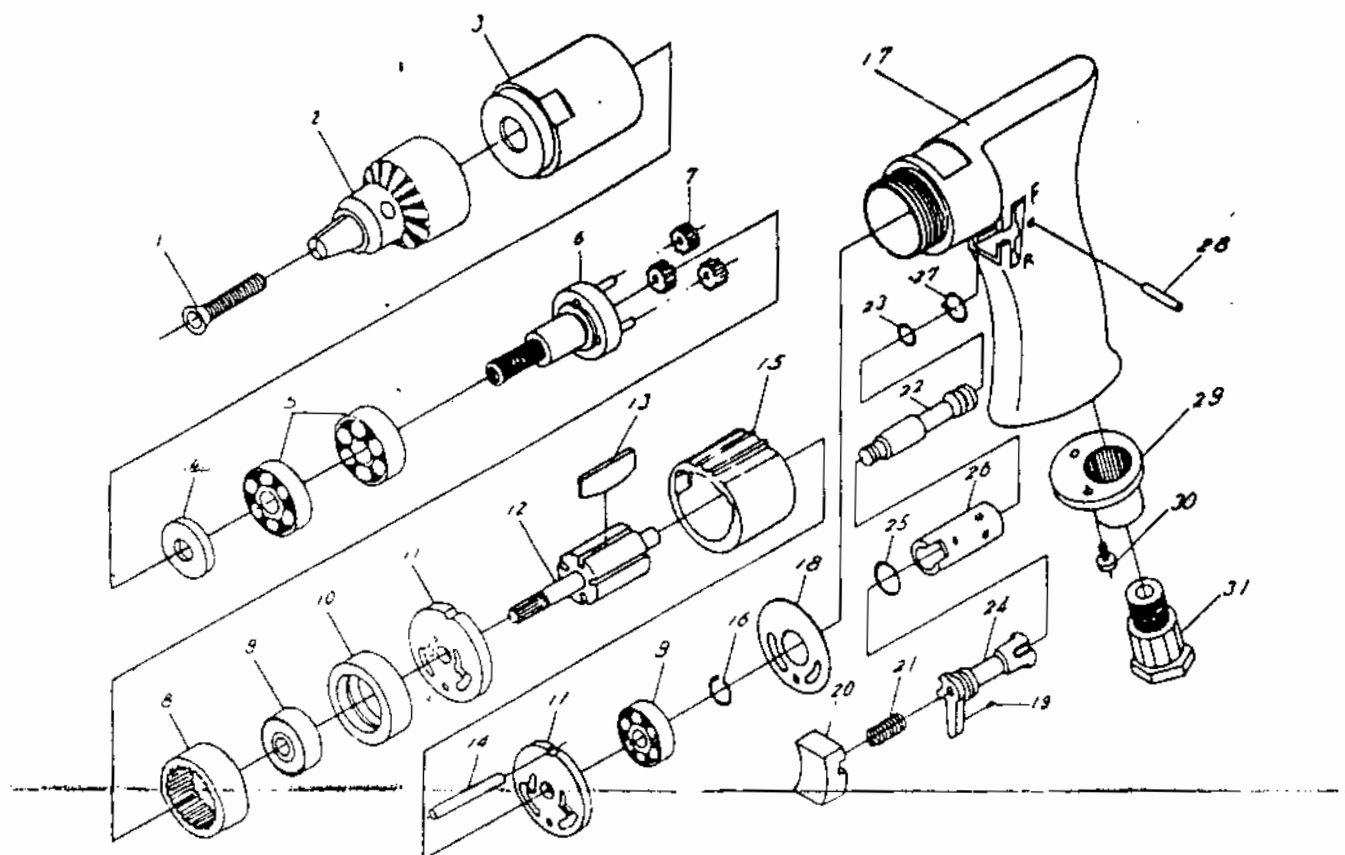


## 1800 R.P.M. 3/8" Reversible Drill



**IMPORTANT! READ CAREFULLY BEFORE OPERATING THIS TOOL. FAILURE TO OPERATE ANY POWER TOOL PROPERLY CAN RESULT IN PERSONAL INJURY AND/OR PROPERTY DAMAGE.**

### SPECIFICATIONS

(3/8" REVERSIBLE AIR DRILL)

Chuck Size . . . . . 3/8"  
 Speed (RPM) . . . . . 1800  
 Spindle Thread . . . . . 3/8"-24  
 Overall Length . . . . . 7-1/2"  
 Net Weight . . . . . 3 lbs.  
 Average Air Consumption . . . . . 4 CFM

Ref. No.	Description	Q'ty	Ref. No.	Description	Q'ty	Ref. No.	Description	Q'ty
6120001	Screw	1	6120013	Rotor Blade	4	6120025	"O" Ring	1
6120002	Drill Chuck	1	6120014	Motor Pin	1	6120026	Reverse Valve Bush	1
6120003	Gear Housing	1	6120015	Cylinder	1	6120027	"O" Ring	1
6120004	Phenolic Washer	1	6120016	Retaining Ring	1	6120028	Pin	1
6120005	Ball Bearing	2	6120017	Motor Housing	1	6120029	Exhaust Diffuser	1
6120006	Planet Carrier	1	6120018	Motor Gasket	1	6120030	Screw	2
6120007	Planet Gear	3	6120019	"O" Ring	1	6120031	Air Inlet	1
6120008	Internal Gear	1	6120020	Trigger	1			
6120009	Ball Bearing	2	6120021	Valve Spring	1			
6120010	Bearing Case	1	6120022	Throttle Valve	1			
6120011	End Plate	2	6120023	"O" Ring	1			
6120012	Rotor	1	6120024	Reverse Valve	1			