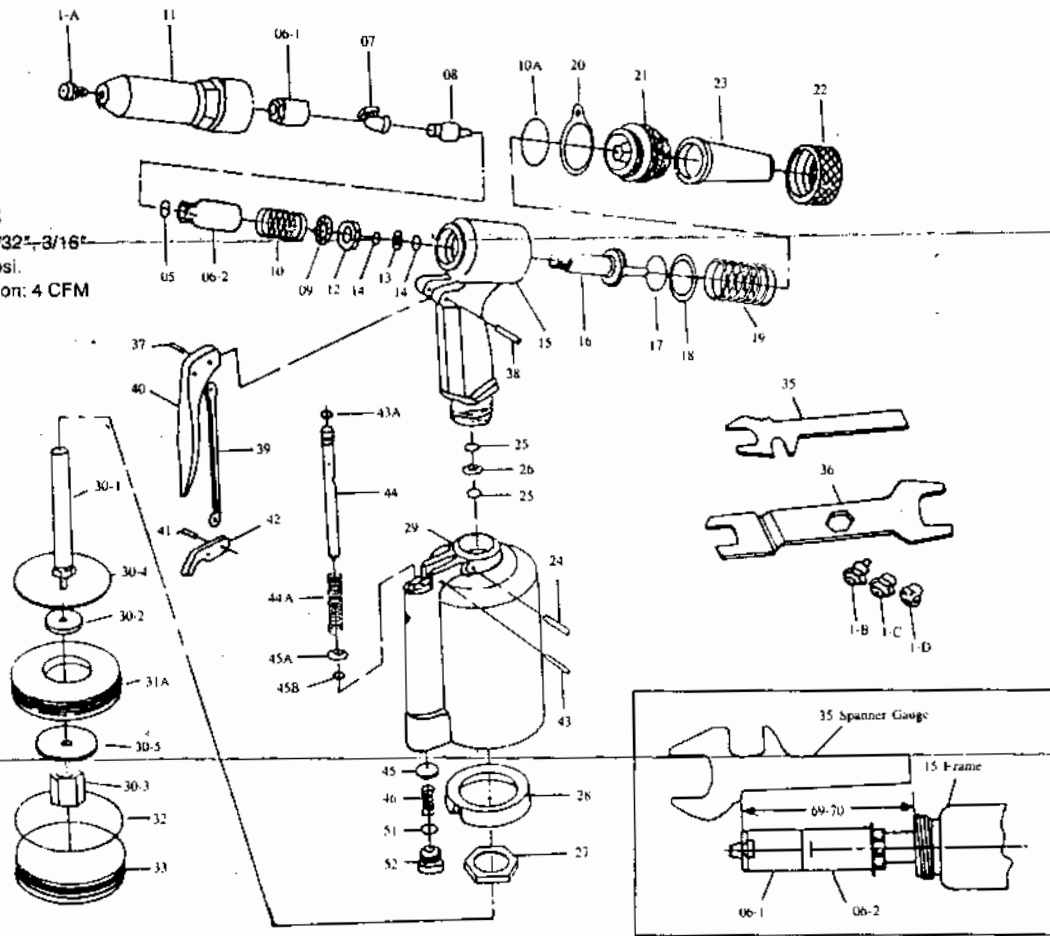


PARTS LIST

STOCK NO.
651

SPECIFICATIONS

Capacity: 3/32", 1/8", 5/32", 3/16"
Air Pressure: 60 - 90 psi.
Average Air Consumption: 4 CFM
Air Inlet: 1/4" NPT
Hose Size: 3/8" I.D.
Weight: 2.85 lbs.



PART NO.	DESCRIPTION	PART NO.	DESCRIPTION
1A	Nosepiece (3/16")	27	Frame Lock Nut
1B	Nosepiece (5/32")	28	Rubber Cushion
1C	Nosepiece (1/8")	29	Air Cylinder
1D	Nosepiece (3/32")	30-1	Air Piston Stem
05	O1 Ring	30-2	Air Piston Al
06-1	Jaw Case Front Tart (3/32", 1/8", 5/32")	30-3	Air Piston Lock Nut
06-2	Jaw Case End Tart	30-4	Big Iron Plate
07	Jaw	30-5	Small Iron Plate
08	Jaw Pusher	31A	Air Piston Ring
09	Case Washer Ring	32	Cylinder O Ring 67.94 x 2.62
10	Jaw Pusher Spring	33	Cylinder Cap
10A	Frame Cap O Ring 27 x 2	35	Spanner Gauge
11	Frame Head	36	Spanner
12	Case Lock Nut	37	Trigger Pin
13	Back Up Ring	38	Connector
14	Back Up O Ring P12	39	Trigger Rod
15	Frame	40	Trigger
16	Oil Piston	41	Connector
17	Oil Piston O Ring P22A	42	Trigger Lever
18	Back UP Ring	43	Lever Pin
19	Return Spring	43A	Valve Pusher O Ring P7
20	Hanging Clip	44	Valve Pusher
21	Frame Cap	44A	Valve Spring
24	Settling Screw Pin	45	Valve
25	Back Up O Ring 12	45A	Valve Collar
26	Back UP Ring	45B	Collar O Ring P5
22	Frame Cap Nut	46	Valve Spring
23	Safety Cap	51	Valve Cap O Ring P11
		52	Valve Cap