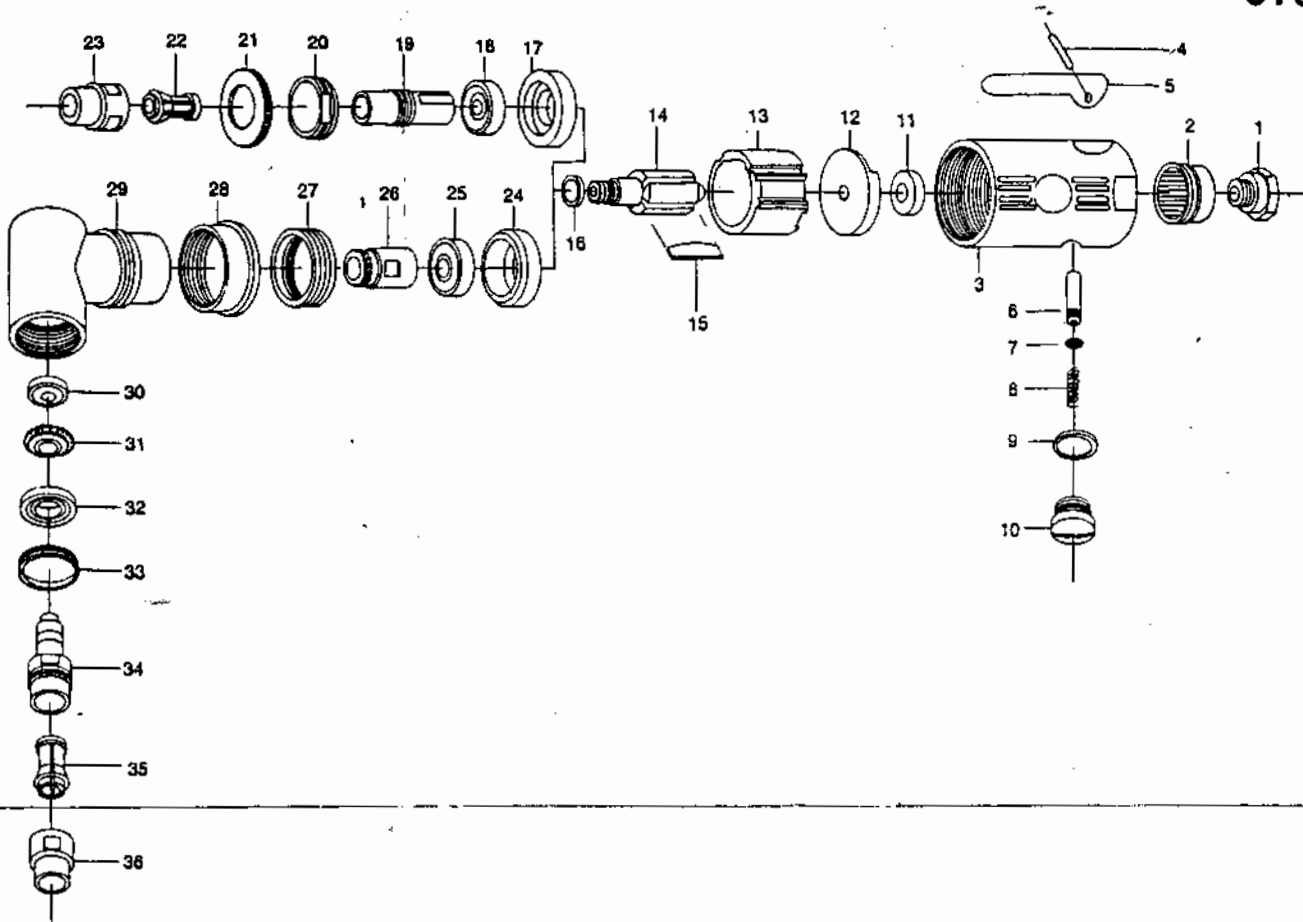


# 1/4" Angle / Die Grinder

STOCK NO.  
**652**  
STOCK NO.  
**653**



Parts No.	Description	Quantity
CH603-01	Hose adapter	1
CH603-02	Exhaust sleeve	1
CH603-03	Motor housing	1
CH603-04	Pin	1
CH603-05	Lever	1
CH603-06	Valve pin	1
CH603-07	Valve	1
CH603-08	Spring	1
CH603-09	O-ring	1
CH603-10	Valve screw	1
CH603-11	Ball bearing	1
CH603-12	Rear plate	1
CH603-13	Cylinder	1
CH603-14	Rotor	1
CH603-15	Rotor blade	4
CH603-16	Bearing spacer	1
CH603-17	Front plate	1
CH603-18	Ball bearing	1

Parts No.	Description	Quantity
CH603-19	Spindle	1
CH603-20	Retaining ring	1
CH603-21	Housing cap	1
CH603-22	Collet	1
CH603-23	Collet nut	1
CH703-24	Front plate	1
CH703-25	Ball bearing	1
CH703-26	Bevel gear	1
CH703-27	Cap lock	1
CH703-28	Cap	1
CH703-29	Angle housing	1
CH703-30	Ball bearing	1
CH703-31	Gear	1
CH703-32	Ball bearing	1
CH703-33	Clamp nut	1
CH703-34	Spindle	1
CH703-35	Collet	1
CH703-36	Collet nut	1