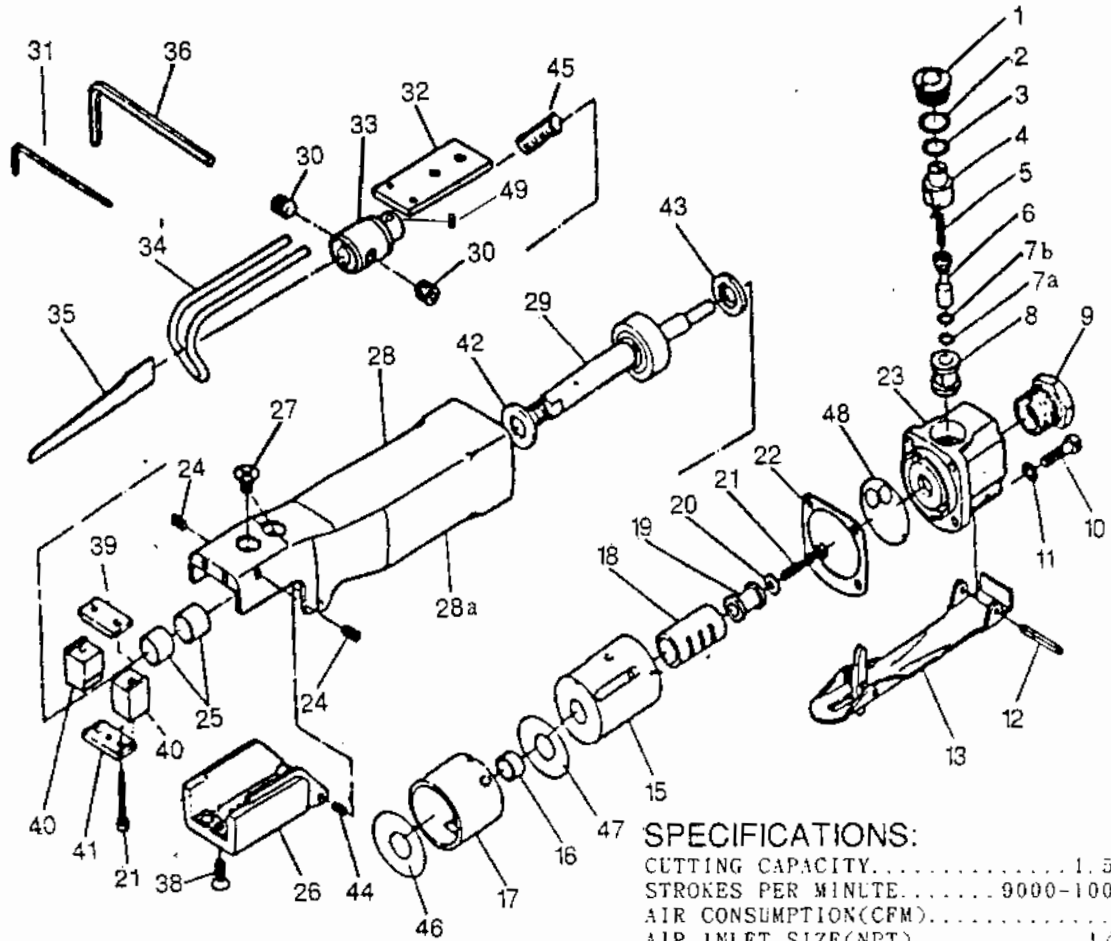


Air saw

670
670



SPECIFICATIONS:
 CUTTING CAPACITY..... 1.5mm
 STROKES PER MINUTE..... 9000-10000
 AIR CONSUMPTION(CFM)..... 6
 AIR INLET SIZE(NPT)..... 1/4"
 OVERALL LENGTH..... 9-1/4"
 NET WEIGHT..... 1.2 LBS
 STROKE LENGTH..... 10mm
 BLADE SIZE..... 32-TEETH/24-TEETH

Index No.	Parts No.	Description	Q'ty	Index No.	Parts No.	Description	Q'ty
1	0301001	Valve Screw	1	27	0301027	Screw	2
2	0301002	O-Ring	1	28	0301028	Housing	1
3	0301003	O-Ring	1	28a	0301028a	Plastic Wrapp	1
4	0301004	Air controller	1	29	0301029	Piston Ass'y	1
5	0301005	Valve Spring	1	30	0301030	Set Screw	2
6	0301006	Valve Stem	1	31	0301031	Service Wrench (2mm)	1
7a	0301007a	P006 O-Ring	1	32	0301032	Guide Plate	1
7b	0301007b	P007 O-Ring	1	33	0301033	Biende Chuck	1
8	0301008	Valve Bushing	1	34a	0301034a	Work Guide (Long)	1
9	0301009	Inlet Bushing	1	34b	0301034b	Work Guide (Short)	1
10	0301010	Cap Screw	4	35a	0301035a	Blade (32T)	1
11	0301011	Washer	4	35b	0301035b	Blade (24T)	1
12	0301012	Lever Pin	1	36	0301036	Service Wrench (4mm)	1
13	0301013	Throttle Lever	1	38	0301038	Screw	1
15	0301015	Valve Case	1	38a	0301038a	Retaining Ring E3	1
16	0301016	Bush	1	39	0301039	Uper Wear Shoe	1
17	0301017	Cylinder	1	40	0301040	Blade Guide	2
18	0301018	Valve Steeve	1	41	0301041	Bridge	1
19	0301019	Actuate Valve	1	42	0301042	Fornt Bumper	1
20	0301020	Washer	1	43	0301043	Rear Bumper	1
21	0301021	Cap Screw	3	44	0301044	Reli Pin	2
22	0301022	Gasket	1	45	0301045	Spring	1
23	0301023	Valve Block	1	46	0301046	Packing	1
24	0301024	Set Screw	2	47	0301047	Packing	1
25	0301025	Bush	2	48	0301048	Packing	1
26	0301026	Chuck Cover	1	49	0301049	Set Screw	1