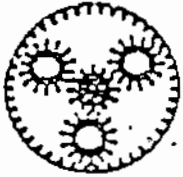
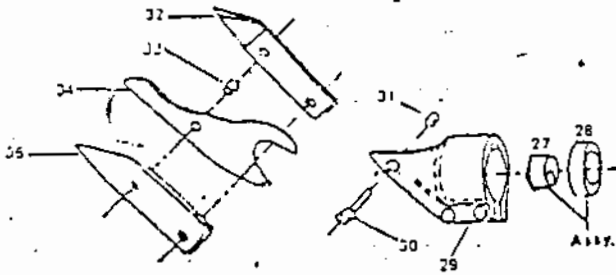
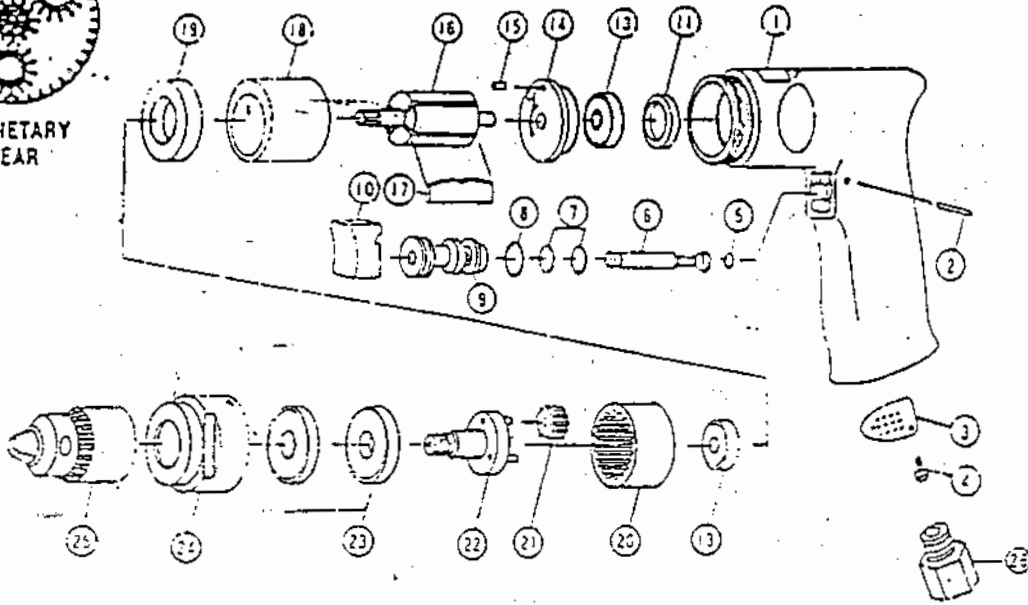


3/8" AIR DRILL AND METAL SHEAR



PLANETARY GEAR



SPECIFICATIONS:

- Chuck Size 3/8"
- Speed (RPM) 2200
- Capacity 1/8"
- Air Inlet Size (NPT) 1/4"
- Air Pressure (PSI) 90
- Air Consumption (SCFM) 4
- Length 6"
- Weight (LBS) 2-1/4"

Index No.	Description	Qty
1	Motor Housing	1
2	Pin	1
3	Exn. Detector	1
4	Screw	1
5	O-Ring	1
6	Valve Stem	1
7	O-Ring	2
8	O-Ring	1
9	Valve Bushing	1
10	Trigger	1
11	Bearing Cap	1
13	Ball Bearing	2
14	Rear End Plate	1
15	Pin	1
16	Rotor	1
17	Rotor Blade	4
18	Cylinder	1
19	Front End Plate	1
20	Ring Gear	1
21	Idler Gear	3
22	Idler Gear Plate	1
23	Ball Bearing	2
24	Lock Nut	1
25	Chuck & Key	1
26	Bushing	1
27	EXCENTRIC NUT	1
28	ROLLER	1
29	CUTTER HOUSING	1
30	LOCK SCREW	3
31	LOCK NUT	1
32	LEFT BLADE	2
33	SPACER	1
34	CENTER BLADE	1
35	RIGHT BLADE	1