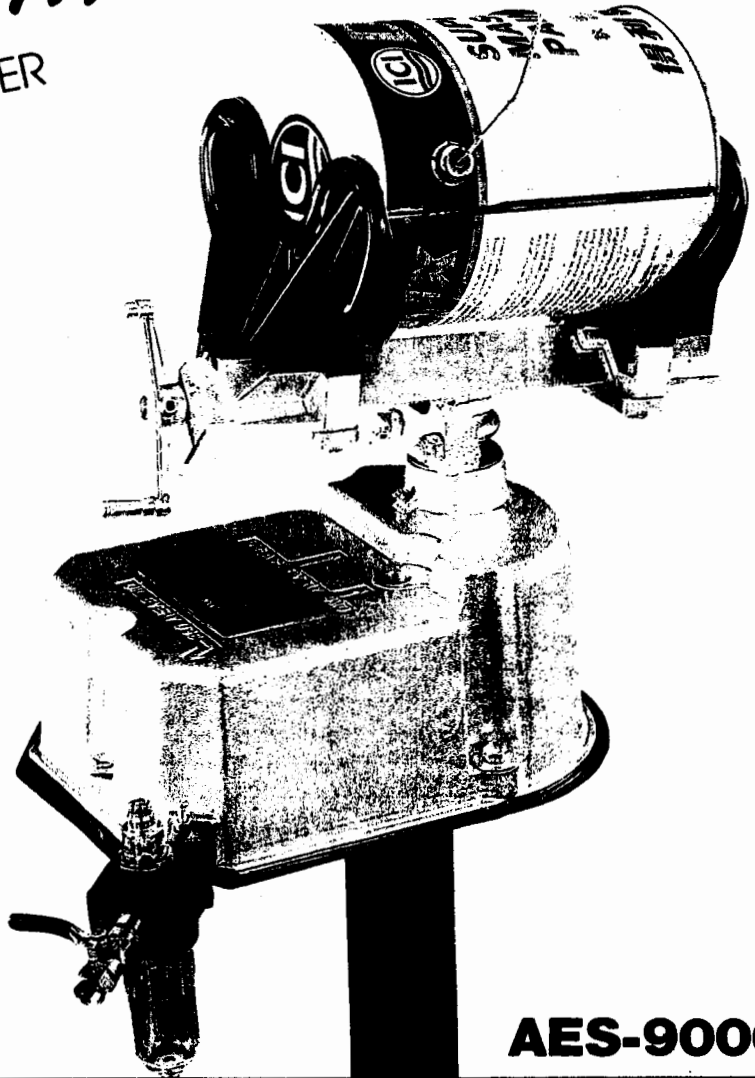




PNEUMATIC

PAINT SHAKER

YOUR PAINTING HELPER



MODEL	QTY	N.W.	G.W.	CUFT
KP-801	1SET	8.4	9.4	1.34'
KP-801A	1SET	7.6	8.6	2.22'

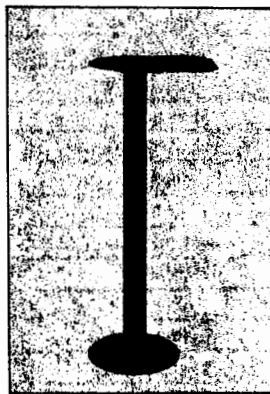
SPECIFICATIONS

- CAPACITY: 1GALLON
- SPEED: 700 CYCLES/MIN
- AIR CONSUMPTION: 4.3CFM(122L/MIN)
- AIR PRESSURE: 70~100 PSI
- AIR INLET: 1/4 PTF
- RECOMENDED SHAKING TIME: 1.5MIN

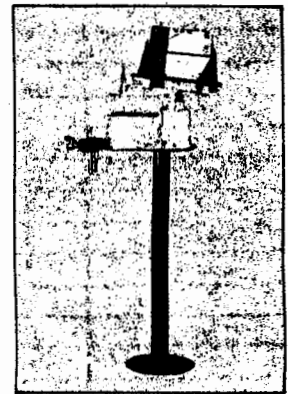
AES-9000



AES-9000

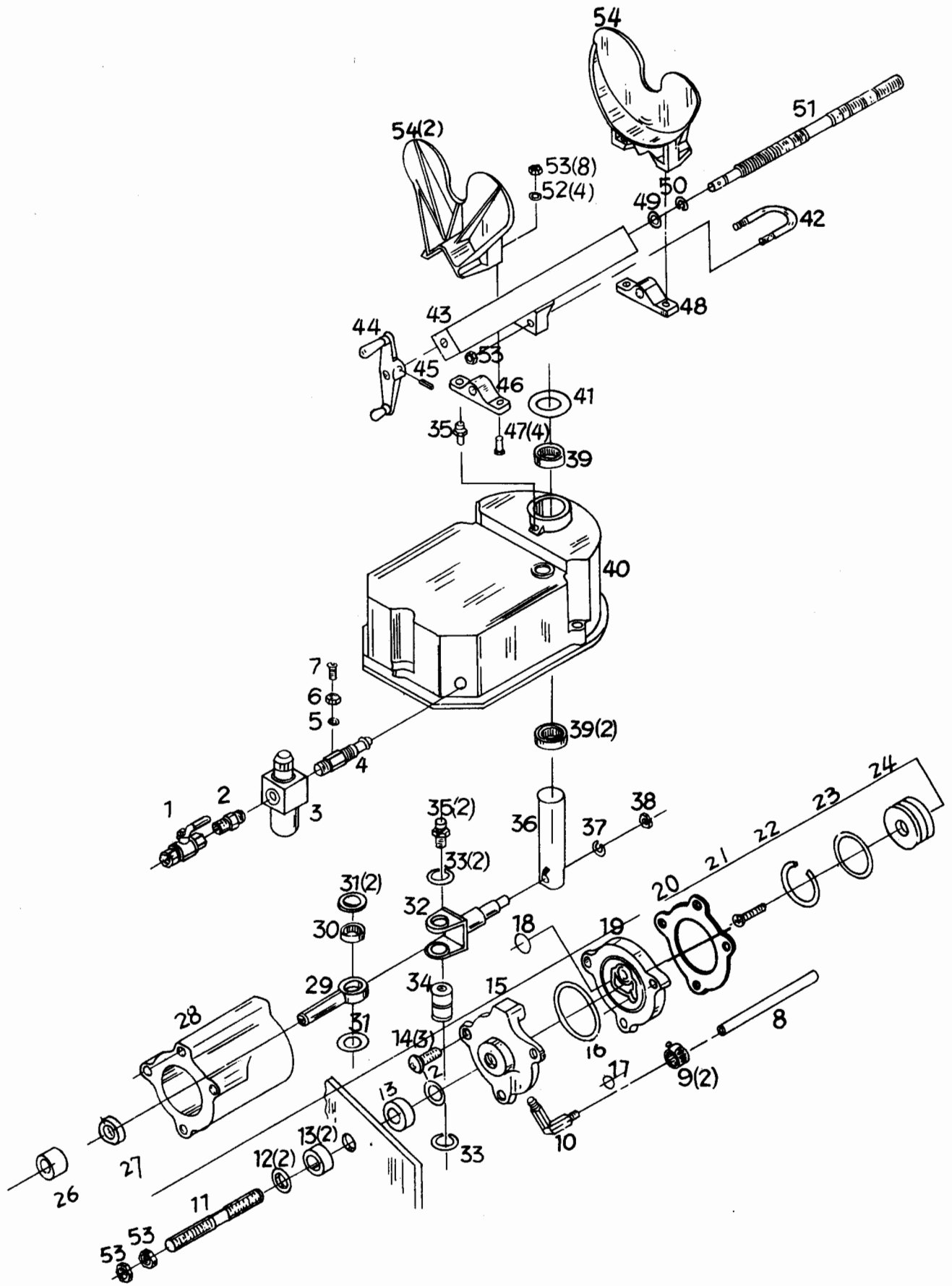


AES-9001



AES INDUSTRIES

DISTRIBUTED BY:



SPECIFICATIONS

Capacity: Pints through 4 liter round cans, including gallons, Imperial gallons, most aerosols (with caps) and square gallons. Up to 16 lbs. gross can weight. Takes 1/4 and 1/2 pints stacked or with spacer.

Speed: Up to 700 cycles/minute at 30° shake angle. Adjustable at control valve; automatically compensates for can size.

Air Pressure: 70 to 175 PSI (lbs./in² gage) (600 to 1200 kPa). Line pressure over 175 PSI requires regulator and relief valve upstream of air hose.

Air Inlet Threads: 1/4-inch PTF (Seal with thread tape or thread sealant).

Air Consumption: Approximately 4.3 CFM (0.002 M³/sec) free air with 1 gallon (U.S.) 12 lb. can at 30° shake angle.

Recommended Oil: Petroleum 5W to 10W Non-detergent Rust Inhibiting Air Tool Oil such as Lubriplate Rockwell 10 R. Oil should contain no gum removers or petroleum distillates. Do not use motor oil.

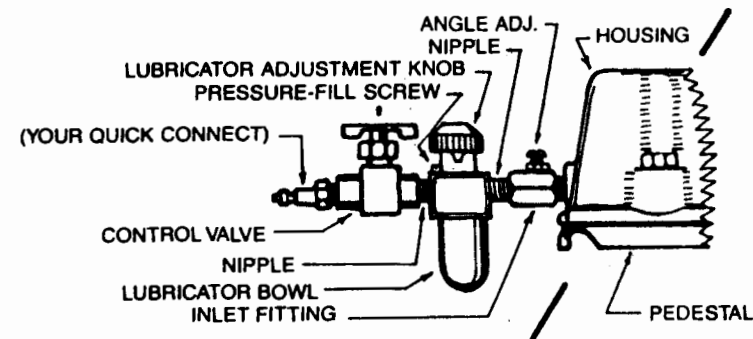
Dil Consumption: 3 drops air tool oil at air inlet before every use, or install automatic lubricator and set oil drip rate per "ADJUST LUBRICATOR". (See "OPERATION") 10 minutes maximum operation between manual oilings.

Grease: Multipurpose calcium or lithium-based chassis grease. Relubricate every 3 to 6 months more often in severe service.

Recommended Shake Time: 1-1/2 minutes, more for severely settled products or low air pressure.

Shake Angle: If operating at over 120 PSI pressure, must be set to 30° with full gallon can clamped, air at maximum normal line pressure. (See "OPERATION".)

Final Filter: Bronze, spring-retained 40 micron element behind Inlet Fil.



OPERATION

CLAMP CAN firmly, but avoid crushing can. Clamp mostly empty cans and aerosol cans with lids toward clamp handle. Clamp square gallons lid up, long sides against clamp jaws, corners resting on jaw cradles. Tighten square gallons securely with can straight up. **WATCH SQUARE GALLONS AND AEROSOL CANS WHILE SHAKING** to make sure they don't leak or come loose. Do NOT SHAKE AEROSOLS FOR MORE THAN ONE (1) MINUTE. DO NOT SHAKE AEROSOLS IF CAN TEMPERATURE IS OVER 100° F (38° C).

START AND STOP shaker by opening and closing control valve quickly, about 1/4 turn. If shaker stops exactly at center position or is not getting enough oil, it may not start automatically. Pull can clamp quickly to one side and let go to start or close control valve, cock can clamp to one side and re-start.

ADJUST LUBRICATOR by pulling up red locking ring (on gold colored lubricators only) and opening (turn counterclockwise), or closing (turn clockwise) oil drip rate adjustment knob or screw on top of lubricator until oil is dripping from the drip spout inside the clear plastic sight tube beneath the adjustment knob. Adjust the oil drip rate as follows:
BLACK LUBRICATORS: 1 DROP EVERY 15 TO 20 SECONDS. SILVER OR GOLD LUBRICATORS: 1 DROP EVERY 2 TO 10 SECONDS.

NOTE: Each time the Shaker is started, lubricator may take a few seconds to start dripping oil.

DO NOT FORCE the adjustment knob or screw. It stops when fully open and when closed. If oiler is not working, check oil level and see "TROUBLESHOOTING".

CHECK OIL LEVEL once a week (more often for heavy duty); Unscrew lubricator bowl and dump watery/milky oil out, Refill to level mark with air tool oil and carefully re-install. Make sure bowl gasket ring is in place and screw bowl on straight.

NOTE: Vibration may make oiling invisible if lubricator is mounted directly to shaker. Set feed rate at light load and reduced speed and unscrew bowl and check oil level after several hours to ensure level is dropping and oil is feeding.

CHECK/ADJUST SHAKE ANGLE if air pressure at shaker is over 120 psi (780 kPa) as follows: With air line at maximum normal pressure, a) Clamp up a full one-gallon round can of paint; b) Start shaker, c) Loosen 3/8-inch lock nut at Adjustment Screw on Air Inlet Fitting and adjust screw to obtain a total shaking angle of motion of about 30°. Stop shaker and tighten lock nut while holding adjustment.

GREASE RELUBRICATE clamp screw and both grease zerk fittings once every six months (more often in severe duty/outdoor/dirty areas). Grease crank pin zerk (one shot) through vent hole when can clamp is rotated left to stop. Dry lube clamp frame.

USE MORE AIR OIL to avoid internal rust if you have heavy air line moisture, and install a filter.

CHECK LUBRICATOR oiling is each time you stop shaker.

PAINT SHAKER

PARTS LIST

Index No.	Parts No:	Description	Q'ty
01	80101	Control Valve	1
02	80102	Brass Nipple	1
03	80103	Lubricator Composition	1
04	80104	Inlet Fitting	1
05	80105	Adj. Seal	1
06	80106	Adj. Jam Nut	1
07	80107	Adj. Screw	1
08	80108	Air Hose	1
09	80109	Hose Clamp	2
10	80110	Inlet Ell Fitting	1
11	80111	Cylinder Stud	1
12	80112	Shock Metal Washer	2
13	80113	Shock Rubber Washer	2
14	80114	Valve Body Screw	3
15	80115	Lower Valve Body	1
16	80116	Valve Body O-Ring	1
17	80117	Check Valve Disc	1
18	80118	Valve Disc	1
19	80119	Upper Valve Body	1
20	80120	Packing	1
21	80121	Piston Screw	1
22	80122	Wear Ring	1
23	80123	Piston O-Ring	1
24	80124	Piston	1
25	80125		
26	80126	Rod Bearing	1
27	80127	Rod Seal	1
28	80128	Cylinder Body	1
29	80129	Cylinder Rod	1
30	80130	Rod End Bearing	1
31	80131	Crank Thrust Washer	2
32	80132	Crank Arm	1
33	80133	Crank Pin Ret. Ring	2
34	80134	Crank Pin	1
35	80135	Zerk Fitting	2
36	80136	Main Shaft	1
37	80137	Spring Lock Washer 1/2"	1
38	80138	1/2"-12 Nut	1
39	80139	Main Bearing	2
40	80140	Housing Assembly	1
41	80141	Thrust Washer	1
42	80142	U-Bolt	1
43	80143	Clamp Frame Weld	1
44	80144	Handle	1
45	80145	Roll Pin	1
46	80146	Clamp Nut (L.H.)	1
47	80147	Jaw Bolt	4
48	80148	Clamp Nut (R.H.)	1
49	80149	Thrust Washer	1
50	80150	Screw Ret. Ring	1
51	80151	Clamp Screw	1
52	80152	Jaw Shin	4
53	80153	3/8"-16 Nut	8
54	80154	Jaw	2