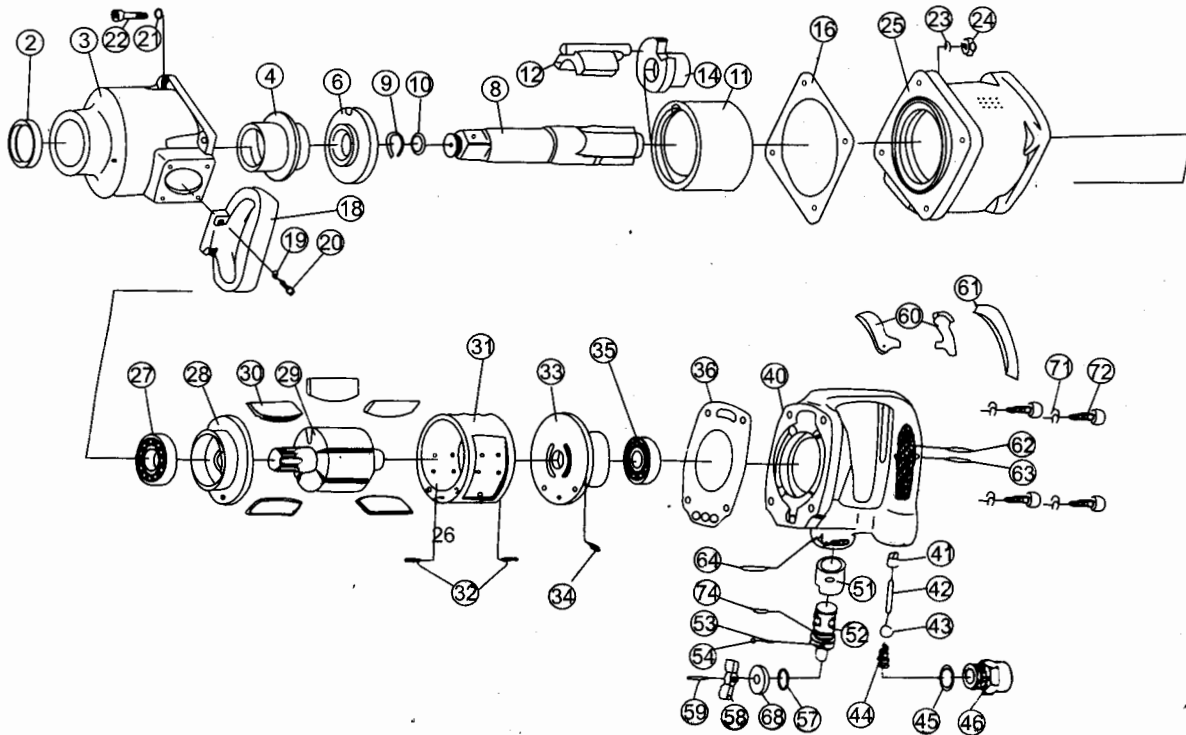


1" IMPACT WRENCH

EXPLODED VIEW



PARTS LIST

◆Parts may be changed with or without notice for improvement.

PARTS NO.	NAME OF PARTS	PER SET	PARTS CODE	PRICE @	ORDER
2	Oil seal	1	040525VB		
3A	Hammer Case Assembly (No.2~No.1)		2285511		
3	Hammer Case	1	22855370		
4	Hammer Case Bushing	1	23225420		
6	Side Plate	1	22855160		
8A	Anvil Assembly (No.8~No.10)		2400312		
8	Anvil(8")	1	22855A20		
8A	2" Anvil Assembly (No.8~No.10)		2400212		
8	2" Anvil (for400SA-2)	1	22856A20		
9	Retainer Ring	1	23225470		
10	O-Ring	1	001400JR		
11	Hammer Frame	1	22855D00		
12	Pin Hammer	1	22855D20		
14	Driver	1	22855C30		
16	Hammer Case Packing	1	22855350		
18	D-Handle	1	10325C10		
19	Spring Washer (for D-Handle)	4	006000SW		
20	Hex.Cap Bolt (for D-Handle)	4	0016180CB		
21	Spring Washer	4	008000SEW		
22	Hex.Cap Bolt	4	008300CB		
25A	Motor Case Assembly (No.23~No.36)		2400A2		
25	Motor case	1	22855461		
26	Helixen	4	008100DN		
27	Ball Bearing	1	06205200		
28	Front End Plate	1	23225040		
29	Rotor	1	22855490		
30	Vane	6	23225500		
31A	Cylinder Assembly (No.31.No.32)		2285523		
31	Cylinder	1	22855190		
32	Spring Pin	2	060180SP		
33A	Rear End Plate Assembly (No.33.No.34)		2325522		
33	Rear End Plate	1	23225050		

PARTS NO.	NAME OF PARTS	PER SET	PARTS CODE	PRICE @	ORDER
34	Spring Pin	1	040100sp		
35	Ball Bearing	1	06204000		
36	Motor Case Packing	1	22855351		
40A	Outside Lever Frame Handle Assembly (No.40~No.60.No.62~No.74)		2322Q3		
40A	Inside Lever Frame Handle Assembly (No.40~No.74)		2322R3		
40	Frame Handle	1	23265D40		
41	Throttle Bushing	1	10325422		
42	Throttle Pin	1	23255280		
43	Throttle Valve	1	002010GB		
44	Throttle Spring	1	23215230		
45	O-Ring	1	002000PR		
46	Inter Bushing	1	23215422		
51	Valve Bushing	1	23255420		
52	Adjust Valve	1	23265010		
53	Spring	1	20191230		
54	Steel Ball	1	00400USB		
57	O-Ring	1	001600PR		
58	Reverse Lever	1	24005E20		
59	Spring Pin	1	03016USP		
60	Outside Lever	1	10325180		
	Inside Lever	1	23215180		
61	Rubber(for inside Lever)	1	23215A90		
62	Spring Pin	1	040260SP		
63	Needle Pin	1	040218NK		
64	Spring pin	1	040300SP		
68	Valve Washer	1	23265510		
71	Spring Washer	4	008000SW		
72	Hex. Cap Bolt	4	008250CB		
74	Spring Pin	1	03008USP		