

CB-
CB-200

COMPACT BENDER - FLOOR
ASSEMBLY & OPERATIONS MANUAL

THANK YOU for choosing a HARBOR FREIGHT TOOLS product. For future reference, please complete the owner's record below:

Model _____ Serial No _____ Purchase Date _____

SAVE THE RECEIPT, WARRANTY AND THESE INSTRUCTIONS. It is important that you read the entire manual to become familiar with the unit BEFORE you begin assembly.



IMPORTANT SAFETY INSTRUCTIONS!



READ ALL INSTRUCTIONS BEFORE USING THIS PRODUCT!

The Operator

COMMON SENSE AND CAUTION ARE FACTORS WHICH CANNOT BE BUILT INTO ANY PRODUCT. THESE FACTORS MUST BE SUPPLIED BY THE OPERATOR. PLEASE REMEMBER:

Do not operate the product if under the influence of alcohol or drugs. Read warning labels on prescriptions to determine if your judgment/reflexes might be impaired.

Do not wear loose clothing or jewelry as they can be caught in moving parts.

Protective gloves and non-skid footwear is recommended.

Use eye and ear protection.

Always wear: ANSI-approved impact safety goggles.

Maintain proper footing and balance at all times.

Work Area

TO AVOID RISK OF PERSONAL INJURY, EQUIPMENT DAMAGE, FIRE AND SHOCK, MAKE SURE YOUR WORK AREA IS:

Free of damp, wet or rainy conditions.

Free of children (never let them handle tools or machinery).

Clean, uncluttered and well-lit.

Be sure that adequate room exists for the Bender and the full length of the item which is to be bent.

When not in use your Bender should be stored in a dry location.

Before Operating

Do not try to use inappropriate attachments in an attempt to exceed the tool's capacity. Approved accessories are available from Harbor Freight Tools.

Check for damaged parts. Before using any tool, any part that appears damaged should be carefully checked to determine that it will operate properly and perform its intended function.

Make certain that the Stand (#11) is securely mounted.

Make certain that Pins (#1 & #2) are fully inserted when making bends.

Do not add extension handles or make any modifications to the Bender.

Operation

Never force the tool or attachment to do the work of a larger industrial tool. It is designed to do the job better and more safely at the rate for which it was intended.

Bend only hot - rolled, mild steel up to 5/16" x 2- 5/8", solid round or square.

Do not bend material greater than 1/4" in thickness around the center pin, use the 1" die so that you do not bend the center pin.

Do not use the Sharp-Right-Angle Bender Attachment to bend round stock.

When using the Sharp-Right-Angle Bender Attachment use only hot - rolled mild steel up to 3/16" x 2" or 1/4" x 1-1/4".

**If there is any question about a condition being safe or unsafe,
DO NOT operate the tool.**

Technical Specifications

Square Tubing:	3"
Height:	34"
Handle Length:	35-3/4"
Stand Base:	.325" Steel
Mounting Holes:	(4) 1/2"
Width of Stock:	1-15/16"
Max. Stock Thickness:	5/16"
Max. Bar Diameter:	5/8"
Dies:	1", 1-1/4", 1-1/2", 1-3/4", 2", 2-1/2", 3"
Tool Weight:	44 lbs.

Unpacking

UNPACK AND CHECK CONTENTS

When unpacking your Compact Floor Bender, check to make sure the following parts are included. Refer to pages 6 and 7 for a complete listing of all parts. If any parts are missing or broken, please call HARBOR FREIGHT TOOLS at 1-800-444-3353.

Assembly

It is important that you read the entire manual to become familiar with the Compact Bender BEFORE you begin operation.

Refer to the Assembly Diagram and Parts List while assembling. Lay out all parts onto a clear section of your workbench prior to assembly.

Mounting Stand

- Step 1) Bolt the Stand (part #11) to a stable surface.
- Step 2) Place the three (3) Mounting Spacers (part #13) over the three holes on the top of the Stand.
- Step 3) Place the Ring Assembly/ Die Receiver (part #10) over the Mounting Spacers so that the two wider holes for the Bolts line up with the corresponding Mounting Spacers (part #13). Secure using the two (2) Bolts (part #16) and two Nuts (part #14).
- Step 4) Place the Ring Assembly Spacer (part #6) between the two holes which are farthest back on the Ring Assembly (part #10). Secure the Ring Assembly Spacer in place by use of the Mounting Bolt (part #15), which will go through the Ring Assembly Spacer, and remaining Nut (part #14).
- Step 5) Place the Handle Die Receiver (part #9) between the Die Receiver (part #10) and secure in place using one of the Long Hitch Pins (part #1). Insert telescoping handle and insert Hitch Pin (part #1).

Operation

Use of the Stop Block

The Stop Block (part # 3) is what holds the material in position while it is bent around either the Center Pin or Die. The Stop Block must be positioned in only four (4) correct ways as shown in Figure 1.

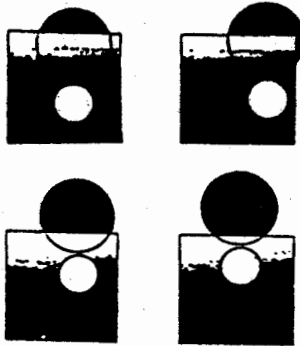


Figure 1
Position of Stop Block

Always position the Stop Block so that it is as close as possible to the center Die, while still allowing for the thickness of the stock. Facing the Bender, the hole in the Stop Block is always positioned off center to the right.

Use of the Sharp Right-Angle-Bending Attachment

- 1) Attach the Right- Angle-Bending Attachment (part #7) as shown in Figure 2.

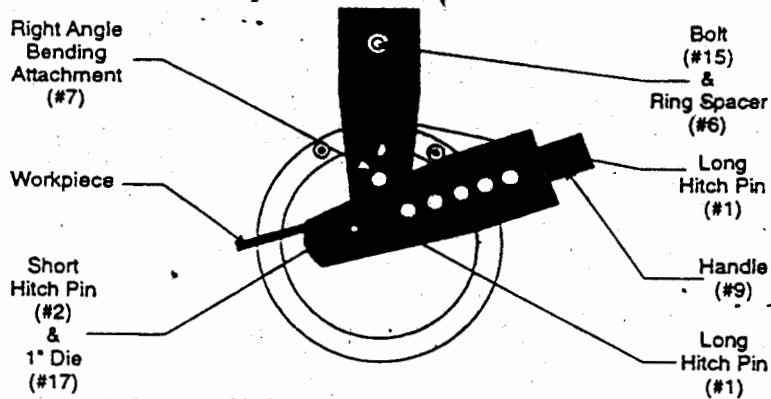


Figure 2 - Using Angle Bending Attachment

- 2) If the Handle (part # 9) will hit the stock due to its length, position the stock to the left of the Handle.
- 3) The Handle is always to be pulled clockwise.
- 4) When making sharp right angle bends, make chalk marks on the flat stock at the points where you want to make the bends.

Use of the Sharp Right-Angle-Bending Attachment. cont.

- 5) Leave only one half of the mark showing when placing the stock. The other half of the chalk mark should be covered by the edge of the Attachment.
- 6) If two right - angle bends are to be made on the same side of the flat stock, the chalk marks will need to be spaced about 1/8 " farther apart than the desired inside dimension. If exact dimensions are required, practice on a test piece first. You may need to adjust your chalk lines or the length of your stock.

Definitions

STOCK LENGTH refers to the length to cut the stock. The CHALK MARK refers to the distance from one end of the material to a chalk mark which you draw on the stock. Drawing chalk marks on the stock is helpful when you want to create scrolls and other designs of equal proportion. Use the same measurements and mark them with chalk marks on each piece of stock.

General Uses for the Bender

The Bender may be used to create different varieties of scrolls and designs with all types of different stock. Round and Flat stock may be used to create handles of varying designs and size. You may also create U - Bolts and Anchor Bolts with the Bender. Additionally, you can use the Bender to create ornamental letters from A to Z.

MAINTENANCE

Lubrication will help to lengthen the life of the Compact Bender.

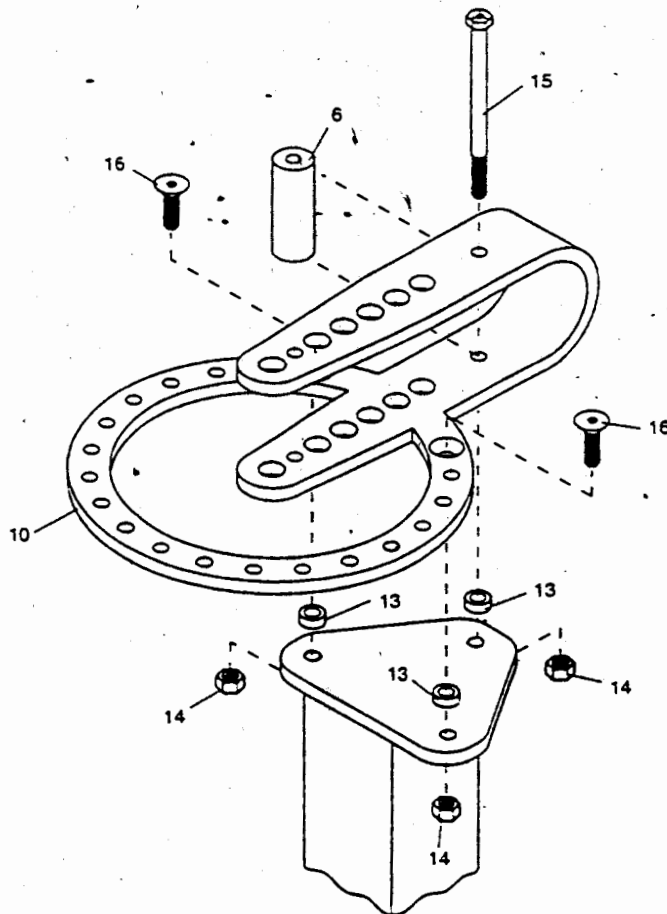
Storage: When not in use, store the Compact Bender in a dry secure location.

KEEP OUT OF REACH OF CHILDREN

Parts List

Part #	Description	QTY	Part #	Description	QTY
1	Long Hitch Pin	2	15	3/8" x 5-1/4" Mounting Bolt	1
2	Short Hitch Pin	1	16	3/8" x 7/8" Mounting Bolt	2
3	Square Stop Block	1	17	1" Die	1
4	Stop	1	18	1 1/4" Die	1
5	Support Pin	1	19	1 1/2" Die	2
6	Ring Assembly Spacer	1	20	1 3/4" Die	1
7	Right Angle Bending Attachment	1	21	2" Die	1
8	Inner Handle	1	22	2 1/2" Die	1
9	Outer Handle/Die Receiver	1	23	3" Die	1
10	Ring Assembly/Die Receiver	1	24	3/8" Washer	2
11	Stand	1	25	3/8" Washer	1
12	Handle Pin and Hair Clip	1	26	Adjustable Stop Loop	1
13	Mounting Spacer	3	27	3/8" Nut	1
14	3/8" Nut	4			

EXPLODED VIEW - A



EXPLODED VIEW - B

