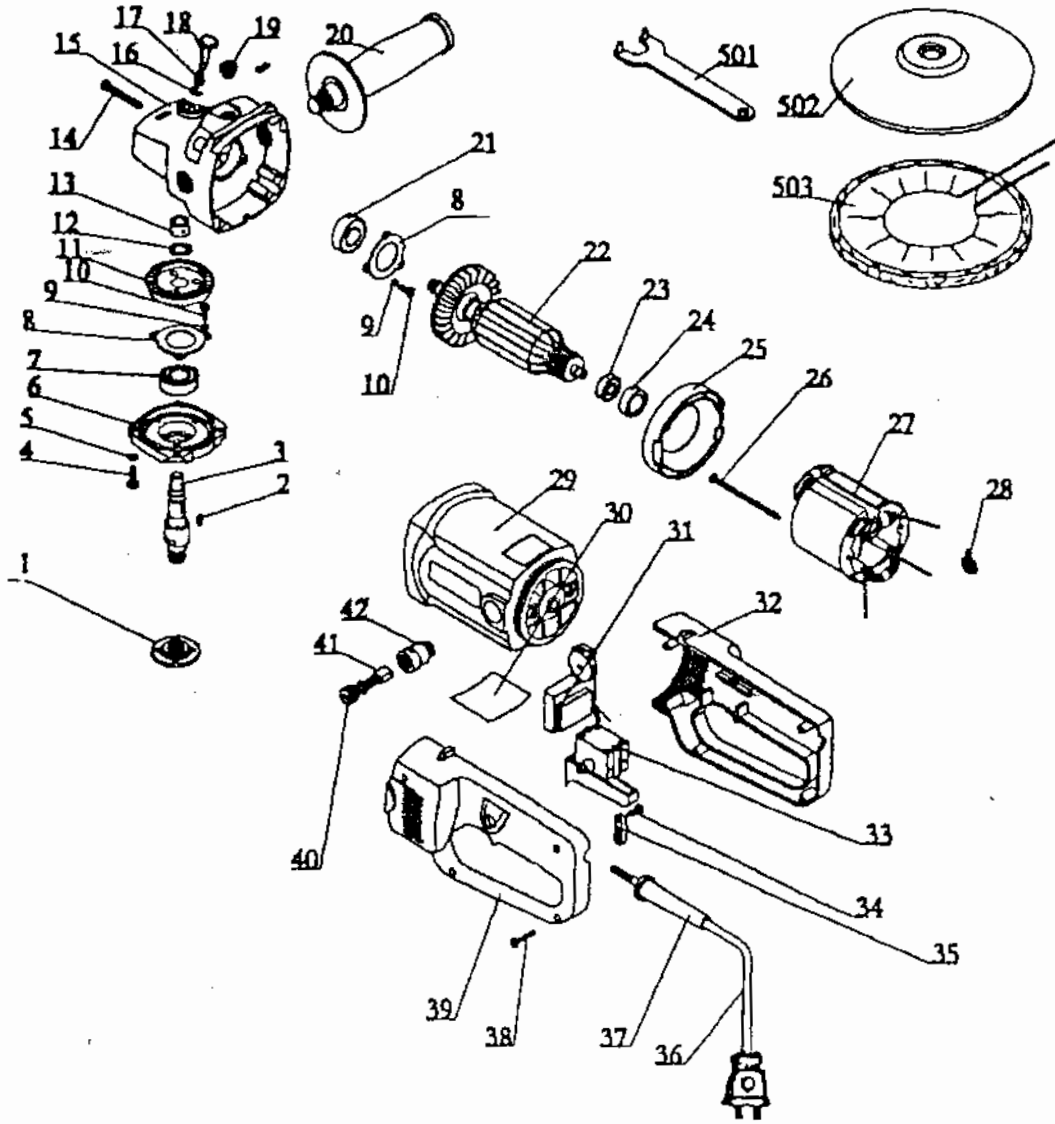


CT-6101

- parts

1 of 2

*Functional Description*



Item No.	Part Name	Q'ty	Item No.	Part Name	Q'ty
1	Outside flange	1	24	Rubber bush	1
2	Key 4 × 5 × 13	1	25	Guide wind circle	1
3	Spindle	1	26	Screw ST4.2 × 75	1
4	Screw M5 × 16	2	27	Stator	1
5	Spring washer	1	28	Terminal	2
6	Bearing housing	4	29	Plastic housing	1
7	Bearing 80102	1	30	Name plate	1
8	Bearing cover	2	31	Variable Switch	1
9	Screw M × 10	6	32	Back handle(A)	1
10	Spring washer 4	6	33	Switch	
11	Big gear	1	34	Screw ST4.2 × 14	2
12	Circlip for shaft	1	35	Cord clip	1
13	Bronze bush	1	36	Cord	1
14	Screw ST5 × 35	4	37	Rubber sleeve	1
15	Reducer	1	38	Screw ST4.2 × 22	5
16	"E" ring 6	1	39	Back handle(B)	1
17	Spring	1	40	Brush cap	2
18	Brake pin	1	41	Carbon brush	2
19	Rubber plunge	3	42	Brush holder	2
20	Side handle	1	501	Spanner	1
21	Bearing 80201	1	502	Polishing discs	1
22	Armature	1	503	Woolen fabrics cover	1
23	Bearing 80018	1			